

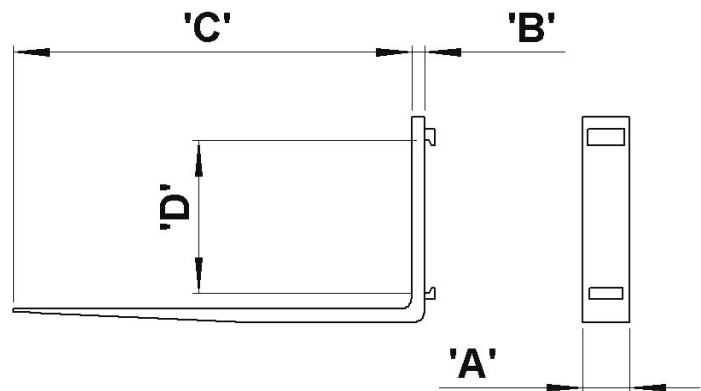
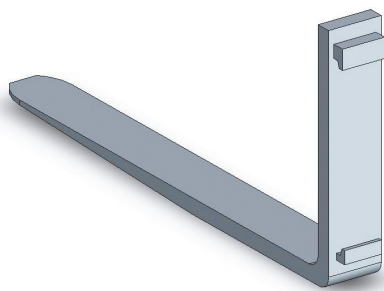
Type FA Fork Tines

Type FA Fork Tines supplied by East West Engineering have been designed and manufactured in accordance with AS2359.1

Fork tines are supplied in a range of capacities and lengths. Always ensure that the rating of the fork tines is equal to or greater than the rated lift capacity of the fork truck.

Note: The fitting of fork tines with a lower rating than the fork truck could lead to failure, resulting in serious injury or death.

- Tough CrMo high tensile steel
- Light weight, slow wearing
- Standard ITA hooks



Type	Capacity at 600mm / pair	“A” mm	“B” mm	“C” mm	Mounting Class “D”	Weight Per pair
FA15-107	1500 kg	100	32	1070	2	72 kg
FA15-120	1500 kg	100	32	1200	2	83 kg
FA25-107	2500 kg	125	35	1070	2	96 kg
FA25-120	2500 kg	125	35	1200	2	107 kg
FA30-107	3000 kg	125	39	1070	3	112 kg
FA30-120	3000 kg	125	39	1200	3	130 kg
FA45-107	4500 kg	125	50	1070	3	154 kg
FA45-120	4500 kg	125	50	1200	3	166 kg

When fitting fork tines, ensure that the marking on the fork tine is compatible with the fork truck rating. Each fork tine is stamped on the side with the relevant information. The rating is for an individual fork tine and should be doubled to provide a total safe working load. Refer to the table above for ratings.